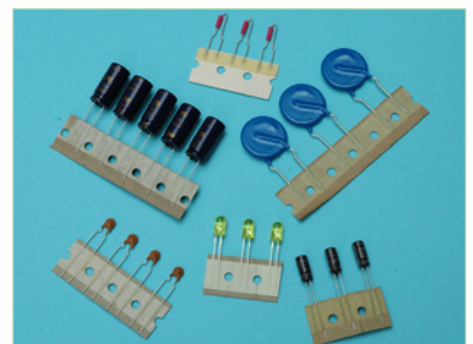
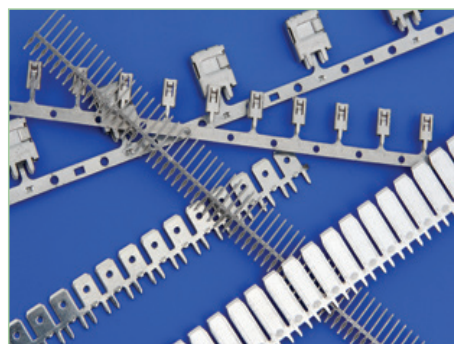
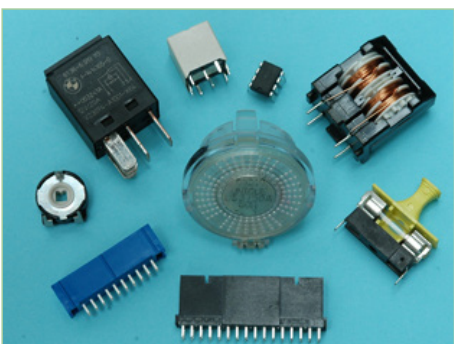
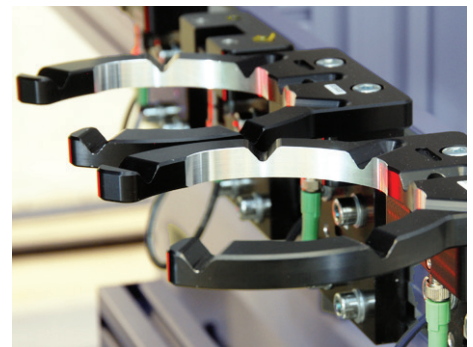
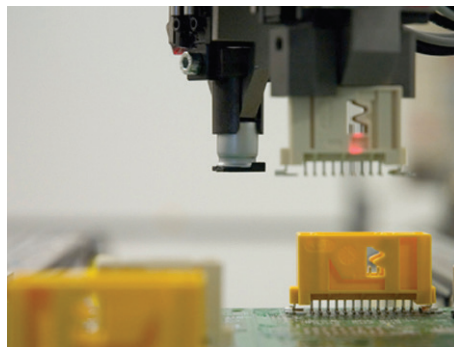
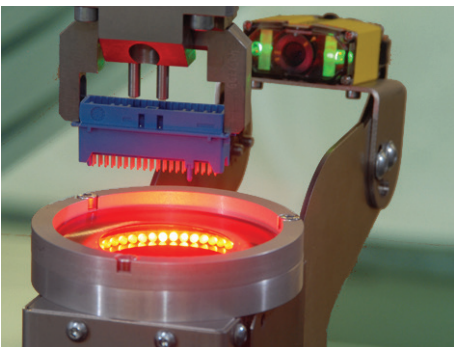


MOUNTING



MOUNTING  
SCANNING  
SOLDERING  
VISION  
WELDING  
CLEANROOM  
CONVEYING  
DEPANELING  
FEEDING  
MARKING

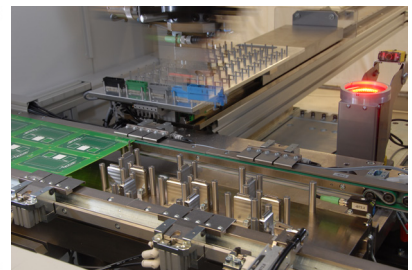
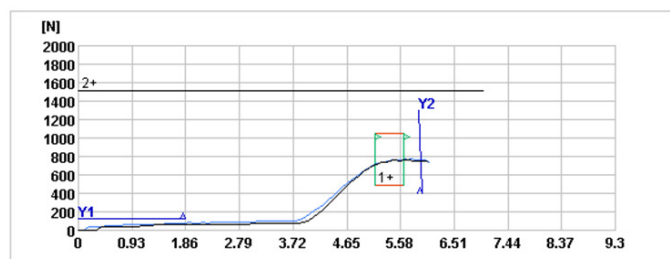
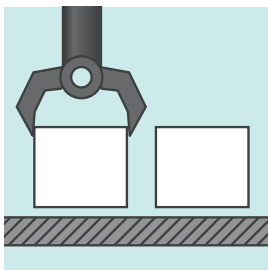


# Mounting solutions

IPTE mounting systems are designed to handle odd form components, contactors and pins and can also be used as integration platforms for other process stages like fluid dispense, screw driving, heat staking etc.

The flexibility of the equipment provides an automation strategy for components and processes even when variable batch sizes and different components styles need to be placed

- Built for high reliability and retain an excellent price/performance ratio
- Placing a wide variety of odd shaped SMD and conventional components
- Intelligent communication to host platform



## Manual Station

- Manual off-line press fit
- Servo controlled or hydro pneumatic press
- 1 Work position
- Excellent process control for press fit
- SMED (single minute exchange of tooling)
- Free programmable positions/angles/forces/speed
- Manual load/unload

## Turntable



- (semi) Automatic off-line placement
- SMED (single minute exchange of tooling)
- 2 - 4 Work positions
- Odd-form components and assembly processes
- Free programmable positions/angles/forces/speed
- Turn table with manual load/unload

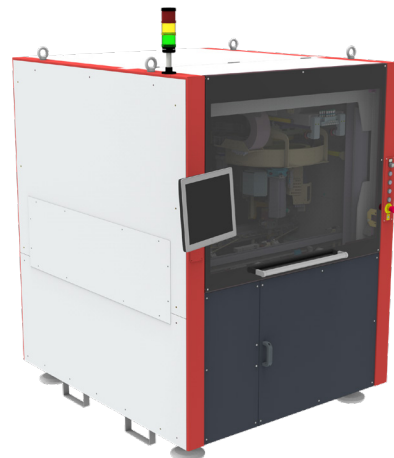
# Mounting solutions

## EasyMounter



- Automatic in-line placement with force control
- Automatic gripper exchange device with tool management and tool recognition
- Up to 6 x 90 mm or 8 x 60 mm feeder slots
- Fits most OFP-equipment
- Odd-form components and assembly processes
- Free programmable positions/angles/forces/speed
- Cartesian axis system with linear motor

## FlexPresser II



- Automatic in-line placement with high press force
- Automatic gripper exchange device with tool management and tool recognition
- Up to xxx feeder slots
- For different types of components with press fit pins
- Free programmable positions/angles/forces/speed
- Linear axis

## HSP II



- Automatic in-line placement with high performance
- Up to 2 (L-Size: 3 heads) for contact placement
- Up to xxx feeder slots
- For different types of contacts: solid or flexible press fit pins, 3D-contacts, THT pins
- Free programmable positions and speed
- Linear axis

## OFP II



- Simple and easy off form pick and place unit
- In-line and off-line capable
- Gantry system for fast and efficient placement
- Up to 18 feeder slots
- Odd-form components and assembly processes
- Intuitive operator interface, easy programming

# Specification

	Manual Station	Turntable	FlexPresser II
Cycle time per component:			6 sec (depends on position and tyoe)
Placement angle contact:			10 / + 370 ° (CNC controlled)
Placement accuracy XY:			
Placement force:			max. 7000 N
Feeding:			max. 6 feeders
Feeder types:			Axial, Radial, Tape, Stick, Tray
Component gripper:			45° / 60°
Component weight:			Max. 400 mm
Minimum contact distance on PCB:			± 50 μ
PCB Dimensions:		60 x 130 mm	390 x 480 mm
Electrical power:			
Compressed air:		6 - 20% bar, DIN ISO 8573 3.4.5	6 - 20% bar, DIN ISO 8573 3.4.5
Color:	RAL 7035 ESD Safe	RAL 7035 ESD Safe	RAL 7035 ESD Safe
Outside dimension (L x D x H):		1.210 x 1.210 x 1.960 mm	1.500 x 1.775 x 2.000 mm
Standards:	CE	CE	CE

	EasyMounter	HSP II	OPF II
Cycle time per component:	2 sec	0,37 sec	0,8 sec (incl. Clinchen)
Placement angle contact:		-90 / 0 / +90° or 0 / 180°	
Placement accuracy XY:	50 μm (20 μm repeat.)	50 μm (20 μm repeat.)	50 μm (20 μm repeat.)
Placement force:	max. 100 N	800 N	100 N
Feeding:		max. 2 per head	9 Feeder slots (90 mm)
Feeder types:	Axial, Radial, Tape, Stick, Tray		Axial, Radial, Tape, Stick, Tray
Component gripper:			
Component weight:			
Minimum contact distance on PCB:		2,54 mm (depends on contact)	
PCB Dimensions:	300 x 300 mm	350 x 470 mm	400 x 450 mm
Electrical power:	3 x 400 V - 5 kVA - 50/60 Hz	3 x 400 V - 3 kVA - 50/60 Hz	3 x 400 V - 5 kVA - 50/60 Hz
Compressed air:	6 - 20% bar, 40 L, DIN ISO 8573 3.4.5	6 - 20% bar, 40 L, DIN ISO 8573 3.4.5	6 - 20% bar, 40 L, DIN ISO 8573 3.4.5
Color:	RAL 7035 ESD Safe	RAL 7035 ESD Safe	RAL 7035 ESD Safe
Outside dimension (L x D x H):	1.000 x 1.610 x 2.190 mm	1.000 x 2.400 x 2.175 mm	1.605 x 2.400 x 2.055 mm
Standards:	CE	CE	CE